

T-CRANE

CRAWLER TELESCOPIC BOOM CRANE



1060



ALMACRAWLER 

T-CRANE 1060

CRANE

SELF-PROPELLED
SELF-LEVELLING

The first pick&carry mini crane with self-levelling technology.

Highly flexible, T-Crane 1060 can be used in variety of lifting situations from internal to outdoor lifting, **on slopes and uneven terrain up to 22°.**

Equipped with our innovative levelling technology, the T-Crane 1060 easily travels and carries **loads up to 990kg**, featuring a **7.7m lifting height** with a **6.1m maximum working radius.**

La prima mini gru pick&carry con tecnologia autolivellante.

Altamente flessibile, la T-Crane 1060 può essere utilizzata in diverse situazioni di sollevamento, da quelle interne a quelle esterne, su pendenze e terreni irregolari fino a 22° di inclinazione.

Dotata della nostra innovativa tecnologia di livellamento, la T-Crane 1060 trasporta facilmente carichi fino a 990 kg, con un'altezza di sollevamento di 7,7 metri e un raggio di lavoro massimo di 6,1 metri.

MODE

WORKING DIAGRAMS

AUTO

STATIC



Maximum lifting performance

Massime performance di sollevamento

DRIVING



Automatic self-propelled function based on load and outreach

Abilitazione automatica alla traslazione in base al carico



Only working diagram of 990 kg (with counterweight)

Solo diagramma di lavoro di 990 kg (con zavorra)



Radio console by AUTECH
Console radio by AUTECH

7,7m
moving
height
altezza traslazione

DYNAMIC LEVELLING

15° LONGITUDINAL
15° LATERAL



Technical data

Max lifting height	7,7 m	Altezza massima di sollevamento
Max moving height	7,7 m	Altezza massima di traslazione
Rotation angle	+/- 110°	Angolo di rotazione torretta
Max working radius	6,11 m x 450 kg	Raggio di lavoro massimo
Max. crane capacity	990 kg x 3,5m	Capacità massima della gru
Pick and carry capacity	990 kg	Capacità di prelievo e trasporto
Length in stowed position with counterweight	4,32 m	Lunghezza richiusa con zavorra
Length in stowed position without counterweight	4,22 m	Lunghezza richiusa senza zavorra
Min width in stowed position	1,35 m	Larghezza minima richiusa
Max working width	2,45 m	Larghezza massima di lavoro
Min height in stowed position	1,91 m	Altezza minima richiusa
Longitudinal leveling	+/- 15°	Livellamento longitudinale
Lateral leveling	+/- 15°	Livellamento laterale
Max gradeability	25°	Pendenza massima superabile
Max side gradeability	25°	Pendenza laterale massima
Drive speed (fast)	2,5 km/h	Velocità traslazione (rapida)
Security speed	0,3 km/h	Velocità sicurezza
Length of winch cable	30 m	Lunghezza cavo verricello

Weights

	EVO	LTH	Pesi
Total weight with counterweight	3850 kg	3910 kg	Peso totale con zavorra
Traffic load with counterweight	3,57 kN/m2	3,63 kN/m2	Carico al suolo con zavorra
Total weight without counterweight	2850 kg	2910 kg	Peso totale senza zavorra
Traffic load without counterweight	2,64 kN/m2	2,7 kN/m2	Carico al suolo senza zavorra

Power

	3TNM68 Yanmar engine (diesel) 17Hp	Lithium battery pack 300Ah-48V DC 4 kW	Potenza
Engine			Motore
Battery Charger	-	N°2 20A-48V	Caricabatterie

Dati tecnici

Extras - On Demand

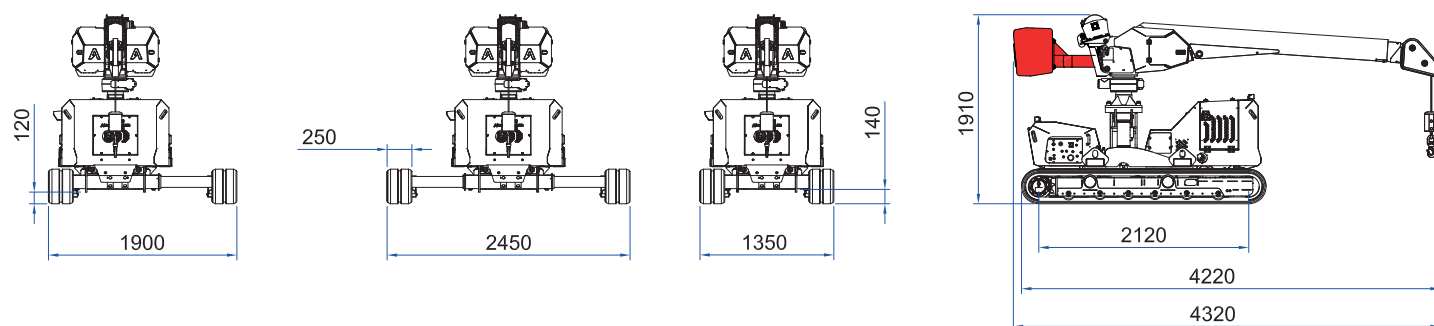
- **Non-marking tracks**
Cingoli antitraccia
- **Electric pump 220V 2,2kW**
Elettropompa 220V 2,2kW
- **Lubricant kit for arctic climate**
Kit Lubrificante per clima artico



Simplify and centralize the management of all after-sales activities, spare parts purchasing and warranty procedures.

Semplifica e centralizza la gestione di tutte le attività post vendita, acquisto ricambi e richieste di garanzia.

**MYALMAC
CONTROL
PANEL**



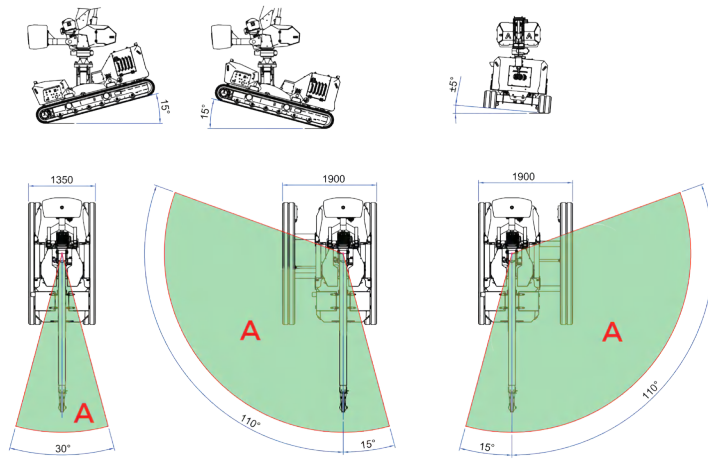
REMOVABLE COUNTERWEIGHT ZAVORRA RIMOVIBILE

Lowers the overall weight to 2.850 kg for easy transportation

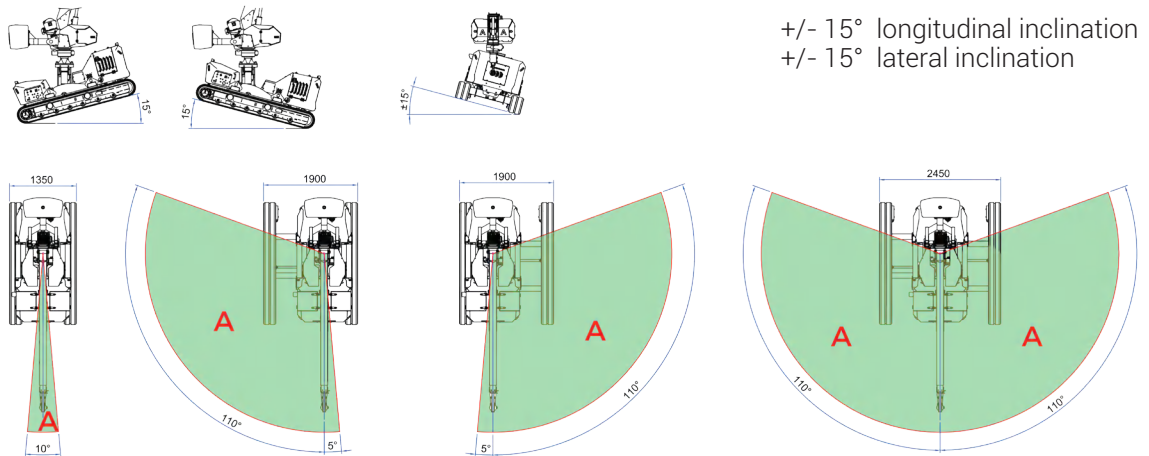
Peso complessivo ridotto a 2.850 kg per un trasporto più agevole



Static working diagrams

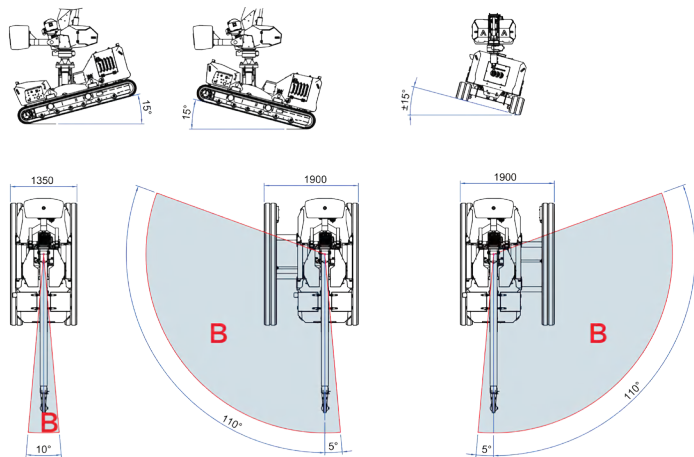


+/- 15° longitudinal inclination
+/- 5° lateral inclination

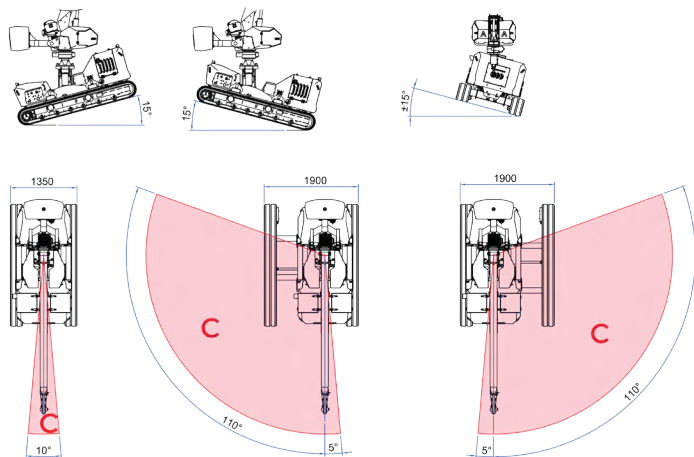


+/- 15° longitudinal inclination
+/- 15° lateral inclination

Driving working diagrams



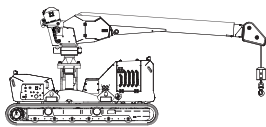
+/- 15° longitudinal inclination
+/- 15° lateral inclination



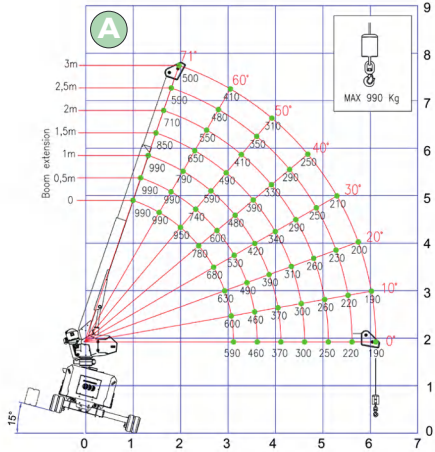
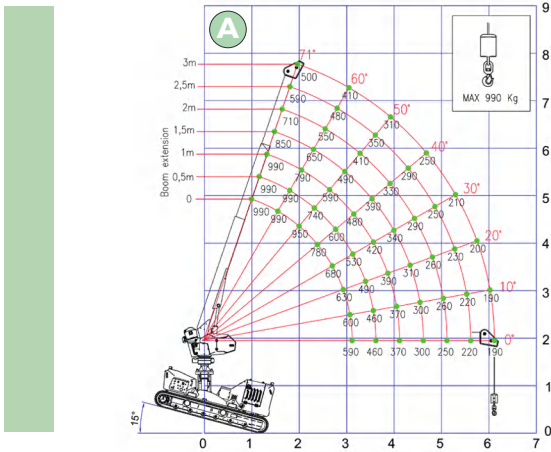
+/- 15° longitudinal inclination
+/- 15° lateral inclination

T-CRANE 1060

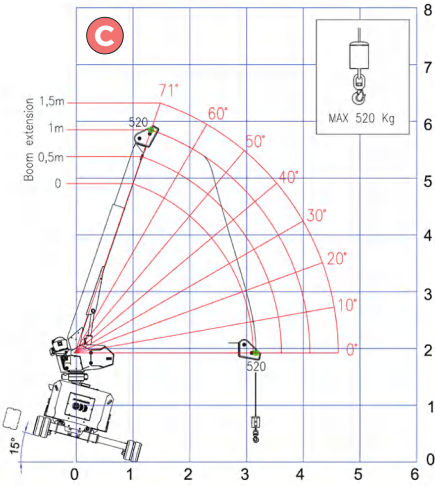
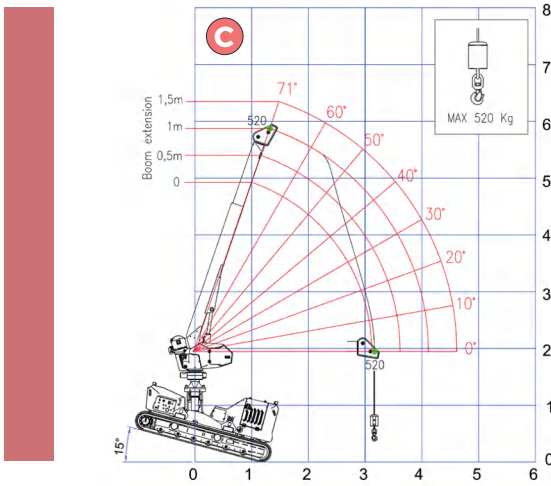
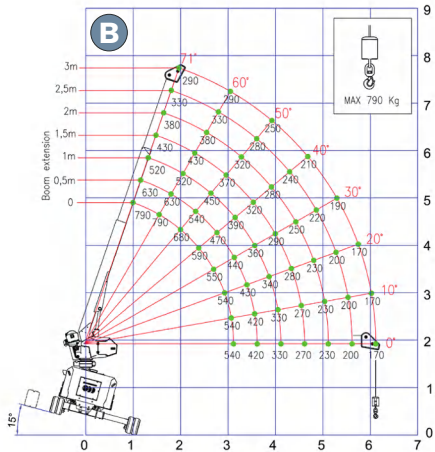
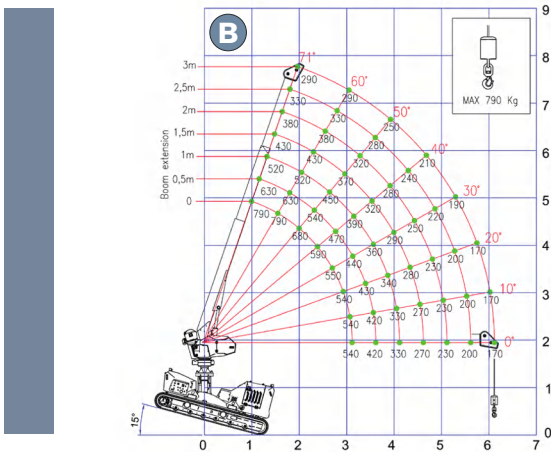
Working diagrams **without** counterweight



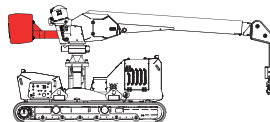
Static working diagrams



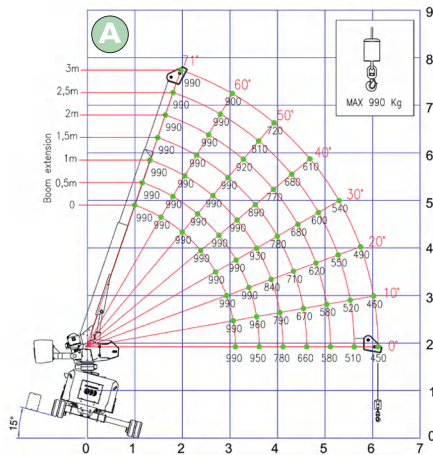
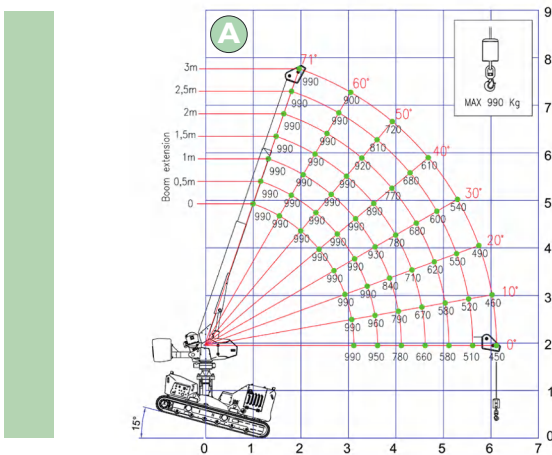
Driving working diagrams



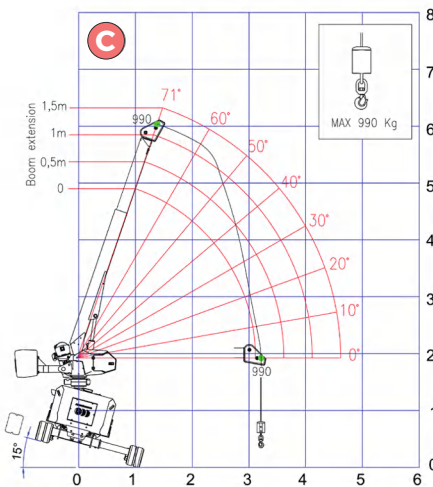
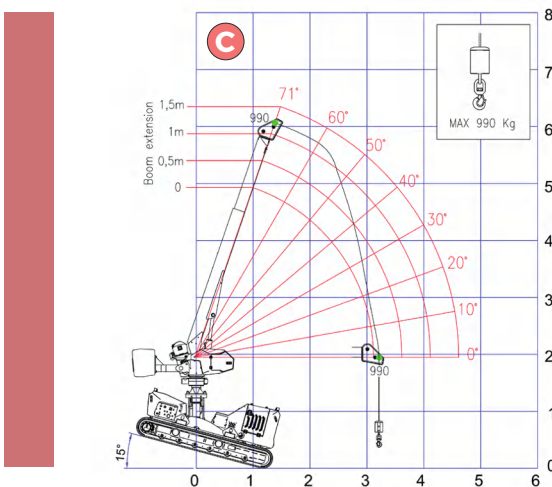
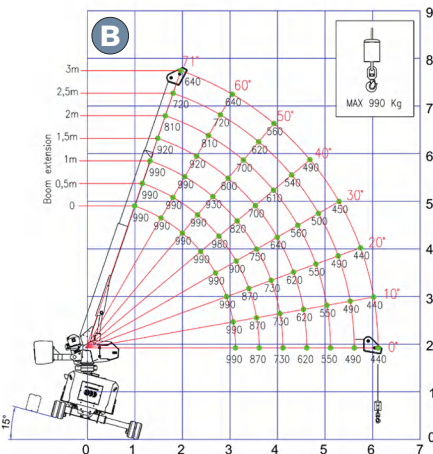
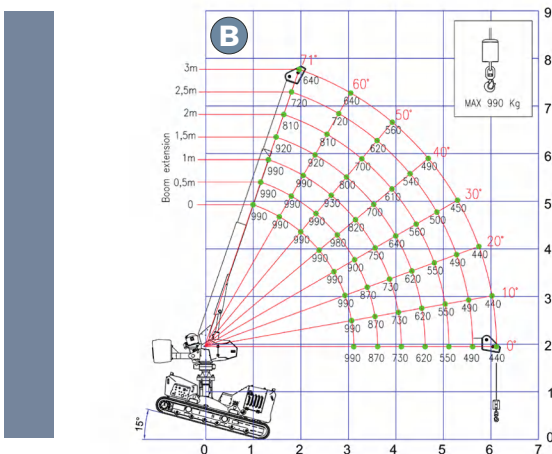
Working diagrams **with** counterweight



Static working diagrams



Driving working diagrams



ALMACRAWLER

Via Caduti sul Lavoro 1
46019 Viadana (MN) - ITALY
+39 0375 83 35 27
info@almac-italia.com
www.almac-italia.com